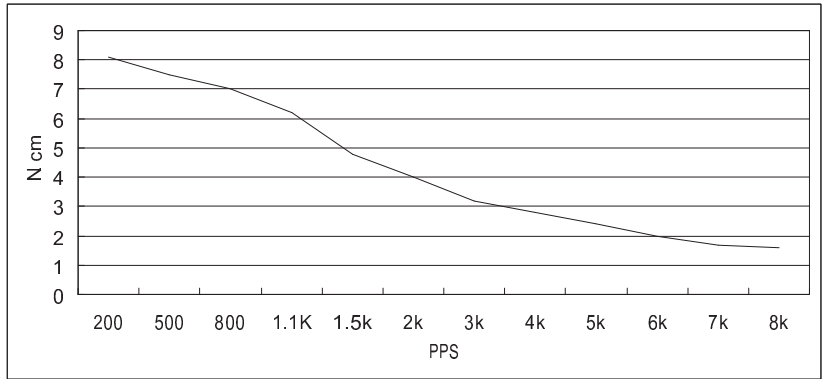


# HIGH TORQUE HYBRID STEPPING MOTOR SPECIFICATIONS

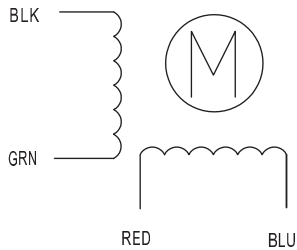
General specifications		Electrical specifications	
Step Angle (°)	1.8	Rated Voltage (V)	10
Temperature Rise (°C)	80 Max (rated current, 2 phase on)	Rated Current (A)	0.5
Ambient temperature (°C)	-20~+50	Resistance Per Phase ( $\pm 10\% \Omega$ )	20 (25°C)
Number of Phase	2	Inductance Per Phase ( $\pm 20\% \text{mH}$ )	13.5
Insulation Resistance	100M $\Omega$ , Min (500VDC)	Holding Torque (Kg.cm)	1
Insulation Class	Class B	Detent Torque (g.cm)	80
Max. radial force (N)	28 (20mm from the flange)	Rotor Inertia (g.cm <sup>2</sup> )	10
Max. axial force (N)	10	Weight (Kg)	0.125

● Pull out torque curve:

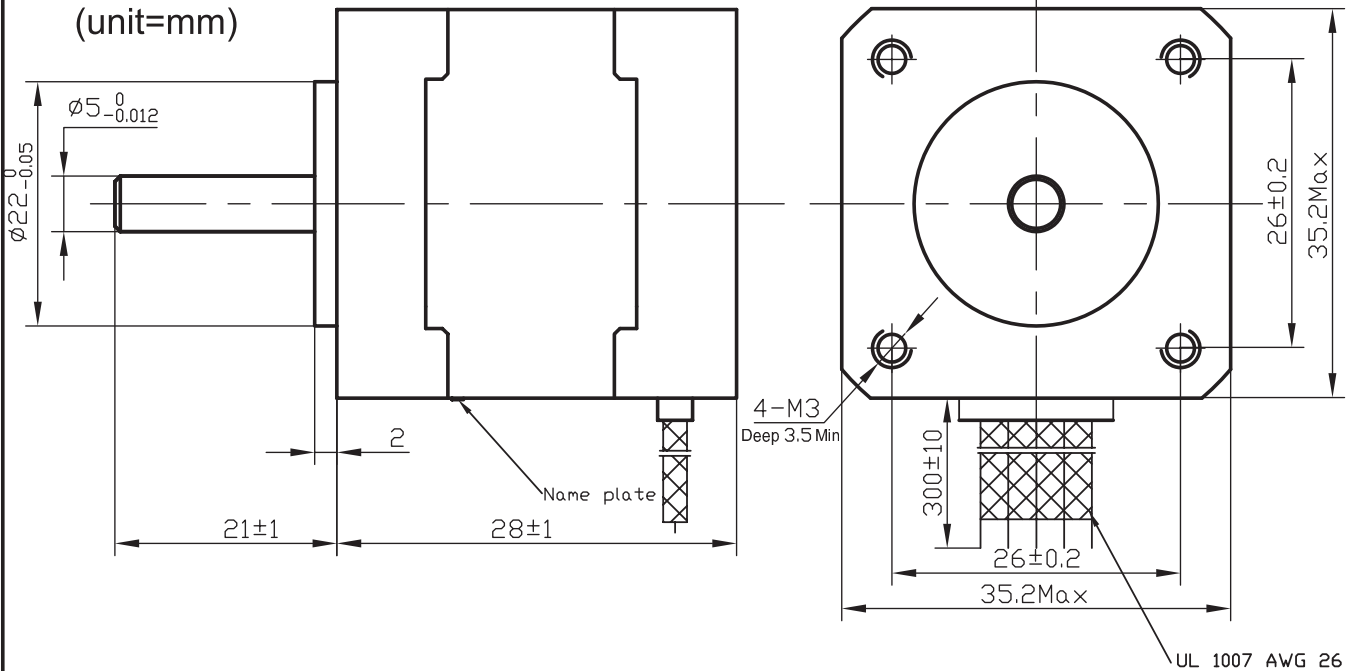
VOLTAGE: 24VDC, CONSTANT CURRENT: 0.5A, HALF STEP



● Wiring Diagram:



● Dimensions:  
(unit=mm)



⚠					<b>SY35ST28-0504A</b>	TECHNICAL CONDITIONS	
⚠	REV	REVISIONS	DESCRIPTION	BY	DATE		
DRAW						CHANGZHOU SONGYANG MACHINERY & ELECTRONICS NEW TECHNIC INSTITUTE	<b>030028000</b>
CHECK							
APPROVE							